

AIRPORT LINK- WHAT'S HAPPENING IN KEDRON?

A year on from the announcement of the beginning of work on the Airport Link and Northern Busway (Windsor to Kedron), construction company Thiess John Holland (TJH) is well advanced with its detailed designs for the projects. This critical phase in the project program requires more than 400 planning professionals to complete the final designs for Australia's largest road infrastructure project.

The preliminary concept designs for the Airport Link projects were announced in March 2006 and the public was invited to comment. In May 2008, BrisConnections was announced as the successful bidder and public consultation was conducted for the project design. The Coordinator-General delivered the Change Report in July 2008 and since then the planning team has been working to complete the detailed designs for the projects (all project maps and reports are available on www.citynorthinfrastructure.com.au). Every detail must be considered, from pedestrian access to bus stop relocations and signalised intersections. While TJH continues to work at the detailed design plans for operation, this newsletter is designed to provide you with an update about the current designs and on-going discussions. As the detailed design phase continues we will provide further information as plans are finalised.

In 2012 what will the Stafford / Gympie Road Intersection look like?

Stafford Road:

- A u-turn facility will be one lane
- Right to Gympie Road will be three lanes
- Left to Gympie Road will be one lane

Gympie Road:

- Left into Swan Street, left into Stafford Road and through to Gympie Road will use one shared lane
- Straight ahead will be three lanes; one of the lanes will be shared with a left turn
- Right to Stafford Road will use one lane; with a separate bus lane also provided

What's being done to address the traffic issues in Kedron?

Every local knows Stafford Road and Gympie Road are major arterial roads whose traffic volumes are expected to continue to increase.

To ensure pedestrian and vehicle safety on major arterial roads, it is road planning policy to restrict access points to and across these types of roads. Airport Link's permanent design changes to the Kedron road network are designed to meet the needs of commuters in 2022 and beyond.

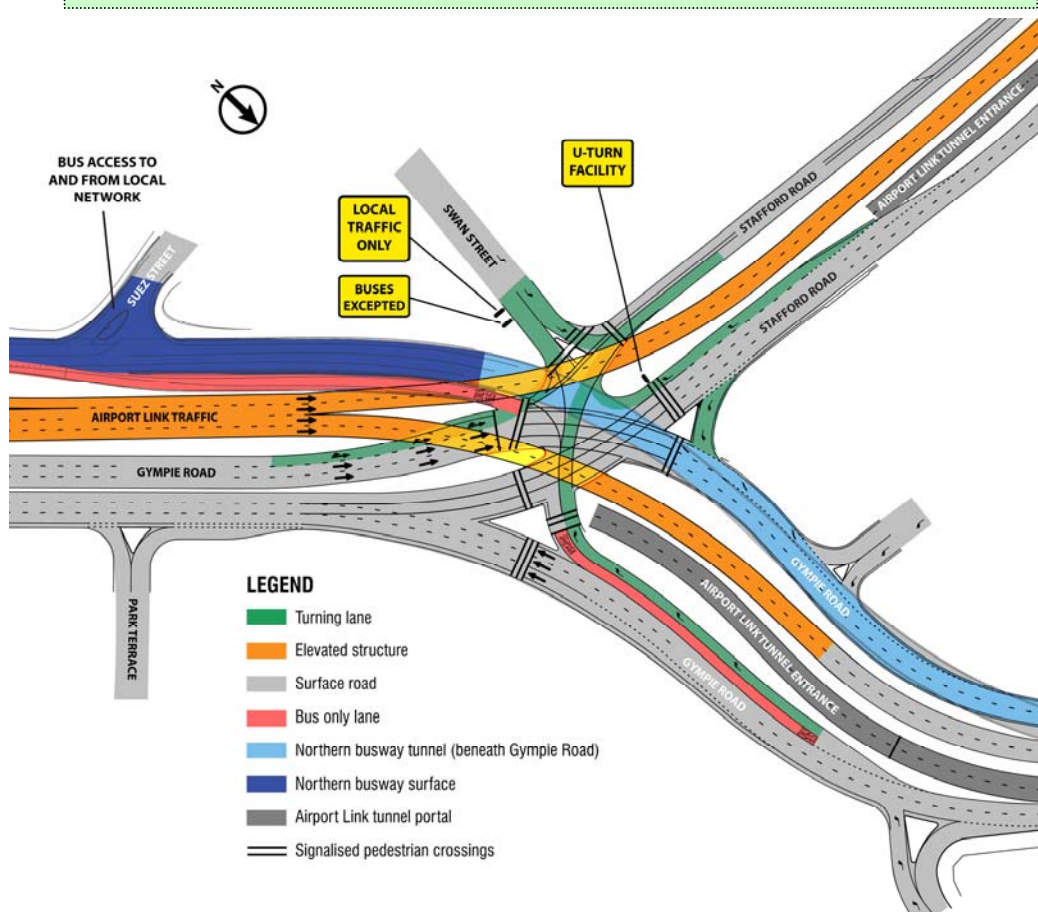
The way residents use the local streets in the area will be affected by the construction and operation of the Airport Link and Northern Busway (Windsor to Kedron). Airport Link changes have highlighted the need for action locally and we are working to establish safe, efficient ways for people to move to and from the area in every direction along arterial roads.

Member for Stafford and Minister for Infrastructure and Planning, Stirling Hinchliffe is working with a taskforce of representatives from the Department of Transport and Main Roads (DTMR) and Brisbane City Council (BCC) to investigate workable solutions for the local Kedron area.

Update about the Stafford Road median strip

It is proposed that a central median along Stafford Road will extend to Richmond Street for the Airport Link. Following community feedback, DTMR is reviewing this requirement for the central median barrier.

DTMR has statewide standards governing the height and length of median barriers, which are determined by variables such as speed, traffic volumes and the types of vehicles travelling on the road in question. DTMR is now reviewing the requirement for a barrier along Stafford Road and once the review is complete, its findings will be assessed and any recommendations will be considered. One possibility being explored is the construction of a raised median with pedestrian fencing.



How are we helping local schools?

DTMR and BCC are working together to identify effective options for managing traffic in the Turner Road school precinct.

Traffic lights have been suggested by BCC for the corner of Somerset and Turner Roads. This solution will be subject to further community consultation which will be conducted by DTMR and BCC in the upcoming months.

What changes can you expect along Stafford Road and Gympie Road in 2012?

Permanent traffic changes on Stafford Road will include the removal of the right turn movements at Clarence Road, Figgis Street & Glenfern Avenue. Maintaining right turn movements at Bradley Avenue is currently being investigated.

For motorists wanting to travel west from these streets, a signalised u-turn facility at the Stafford Road / Gympie Road intersection will be introduced. This u-turn will be located approximately 600 metres from Glenfern Avenue, 500 metres from Figgis Street and 300 metres from Clarence Road.

The permanent design will maintain all turning movements at the Lennon Street and Richmond Street signalised intersections.

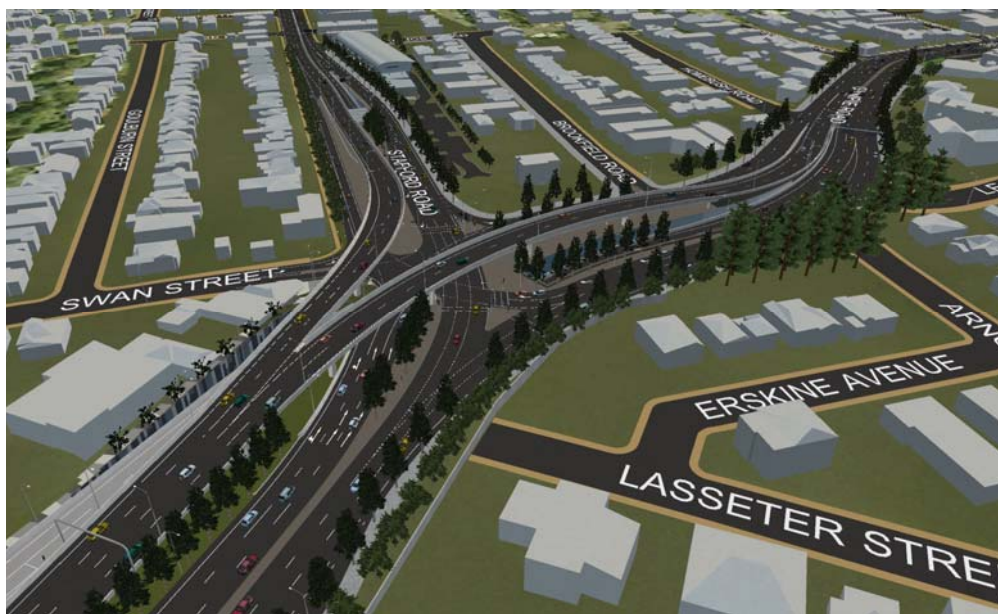
Permanent traffic changes on Gympie Road will include the removal of the right turn at Somerset Road. Homebush Road, Brookfield Road, Broughton Road and Cremorne Road will remain left in and left out.

Motorists wanting to travel south will access Gympie Road by the signalised intersections at Strathmore Street and Kitchener Road.

There will be no changes to access from Brisbane's north west suburbs.



Artist Impression 2012: Stafford Road, heading towards Gympie Road



Artist Impression 2012: Stafford Road and Gympie Road Intersection



The Northern Busway will join the surface at Gympie Road

What benefits are these projects bringing to Kedron?

The \$4.8 billion Airport Link, Northern Busway (Windsor to Kedron) and Airport Roundabout Upgrade projects are meeting the needs of Brisbane's rapidly growing population. Together they will:

- Provide a vital connection from the northern suburbs to the CBD, Airport and Australia Trade Coast region
- Enable motorists to bypass up to 16 sets of traffic lights between Bowen Hills and Kedron
- Reduce traffic on local streets by between 10% and 40%
- Improve connectivity between arterial roads and improved travel times through the inner northern suburbs
- Enhance the liveability of the northern suburbs with freed-up surface road space available for improved public transport and pedestrian and cycle links
- Make buses more frequent, reliable, comfortable and easy to use
- Cater for a bus every 30 seconds in peak hour in 2016
- Help reduce congestion, pollution and traffic noise
- Plant more than 1 million plants and 5,400 new trees across the project's alignment

Timeline - Kedron Traffic Changes taskforce

| | |
|-----------------------|--|
| 3 April 2009 | Taskforce developed and initial meeting held |
| 26 June 2009 | Taskforce meeting 2 |
| August 2009 | Taskforce meeting 3 |
| September 2009 | Kedron Community Information Session |

If you have any questions or want more information about the changes occurring in Kedron, please contact CNI:

Phone 1800 990 038 (8:30am to 5:00pm)
Email info@cni.qld.gov.au
Website <http://www.citynorthinfrastructure.com.au/>

If you have any questions or want more information about construction in Kedron, please contact:

Phone 1800 721 783 (24 hour hotline)
Email contactus@tjh.com.au
Web www.brisconnections.com.au
Visit Visitor Information Centre, Centro Lutwyche, Lutwyche Rd, Lutwyche QLD
Wednesday 10am to 4pm,
Thursday 2pm to 7pm
Friday 10am to 4pm
Saturday 9am to 12pm