

## AIRPORT LINK: SEPTEMBER UPDATE

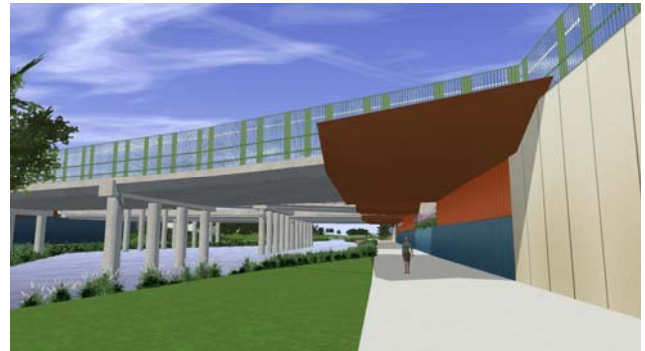
### THE LATEST FROM THE KEDRON TRAFFIC TASKFORCE

Over the last five months the Kedron traffic taskforce has been investigating workable solutions for road changes in the Kedron area.

The Member for Stafford, Stirling Hinchliffe along with the Department of Transport and Main Roads (DTMR) and Brisbane City Council (BCC) have taken note of feedback from the community and are re-evaluating some elements of the permanent traffic changes on the Airport Link and Northern Busway (Windsor to Kedron) projects in the area.

This newsletter is to provide you with detailed information on the decisions made at the last traffic taskforce meeting held in August 2009.

1. ***Right hand turns will be retained from Bradley Avenue west on to Stafford Road***
2. ***Stafford Road barrier will be replaced with 900mm wide median strip between Clarence Road and Khartoum Street***
3. ***Investigations continue regarding the upgrade of the Strathmore Street intersection.***
4. ***Queensland Transport and BCC will continue to assess the needs around street parking at the Kedron and Lutwyche busway stations.***



**Kedron Brook**

### Bradley Avenue

Following the completion of the Airport Link and Northern Busway (Windsor to Kedron) project, the right turn from Bradley Avenue west on to Stafford Road will continue, unless it is deemed unsafe in the future.

Retaining this right turn means that households heading east of Bradley Avenue and north of Somerset Road will be able to travel west to Stafford City Shopping Centre and beyond, outside peak hour, without travelling past the Turner Road schools precinct.

DTMR traffic counts have been completed to determine whether the right turn from Stafford Road into Bradley Avenue will be retained during off peak periods.

These results indicate that Stafford Road is at peak for the majority of the day (7am to 7pm) and that these turning manoeuvres are already rarely being used by locals.

## Stafford Road Barrier

After strong representations from local residents, DTMR has agreed that a concrete barrier planned for the middle of Stafford Road between Clarence Road and Khartoun Street, will be replaced with a 900mm wide median strip.

DTMR's traffic engineers have confirmed a barrier will be required between Khartoun and Richmond Street, as well as a barrier around the Airport Link tunnel portal and Stafford Road exit ramps.

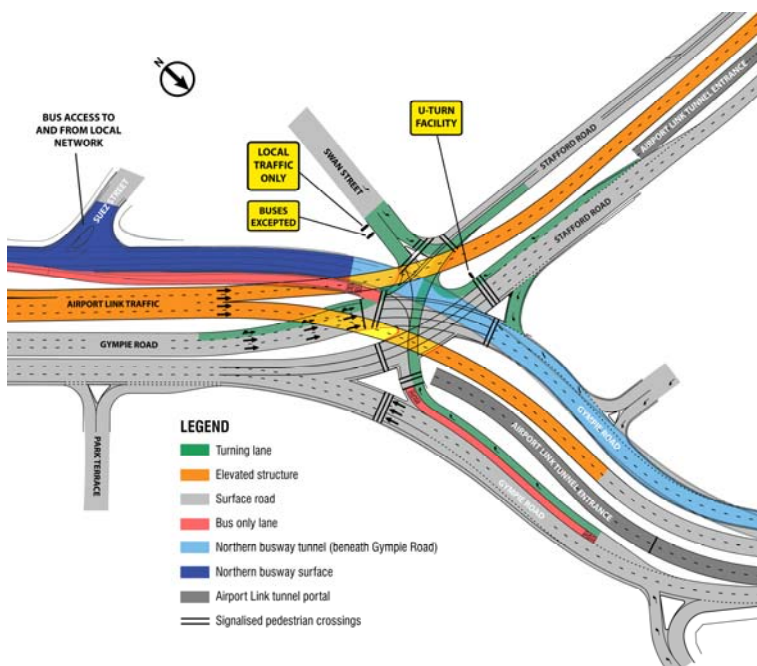
These barriers will protect drivers from roadside infrastructure such as stand-alone traffic signals and signs.

The effectiveness of the median strip will be monitored after the opening of the Airport Link to determine whether pedestrian fencing is also required.

## Strathmore Street

More investigation by DTMR is required to determine whether the Strathmore Street intersection can be upgraded.

Many residents have said there is an existing problem with cars queuing across the street at the local fast food outlets. DTMR is looking at ways to improve this intersection.



Kedron Brook Busway Station

## Busway Station Parking Update

21. September. 2009

Queensland Transport and BCC are assessing options for parking controls around the new busway stations at Kedron and Lutwyche.

Current arrangements at existing busway stations, such as Holland Park, are being reviewed to assess suitability for the Northern Busway.

After the analysis of current practices is complete, a plan for local parking controls will be developed for consultation with the community. It is then planned to have the controls in place prior to the opening in the Northern Busway in 2012. The parking scheme would then be monitored and adjusted as required.

## Timeline - Kedron Traffic Taskforce

- 3 Apr 2009 Taskforce developed
- 26 June 2009 Taskforce meeting 2
- 27 Aug 2009 Taskforce meeting 3
- 12 Sept 2009 Community Information Session

If you want more information about changes occurring in Kedron, please contact:

Phone 1800 990 038

Email [info@cni.qld.gov.au](mailto:info@cni.qld.gov.au)

Web [www.citynorthinfrastructure.com.au](http://www.citynorthinfrastructure.com.au)

Visit BrisConnections Visitor Information Centre, Lutwyche Centro, Lutwyche Rd, Lutwyche QLD