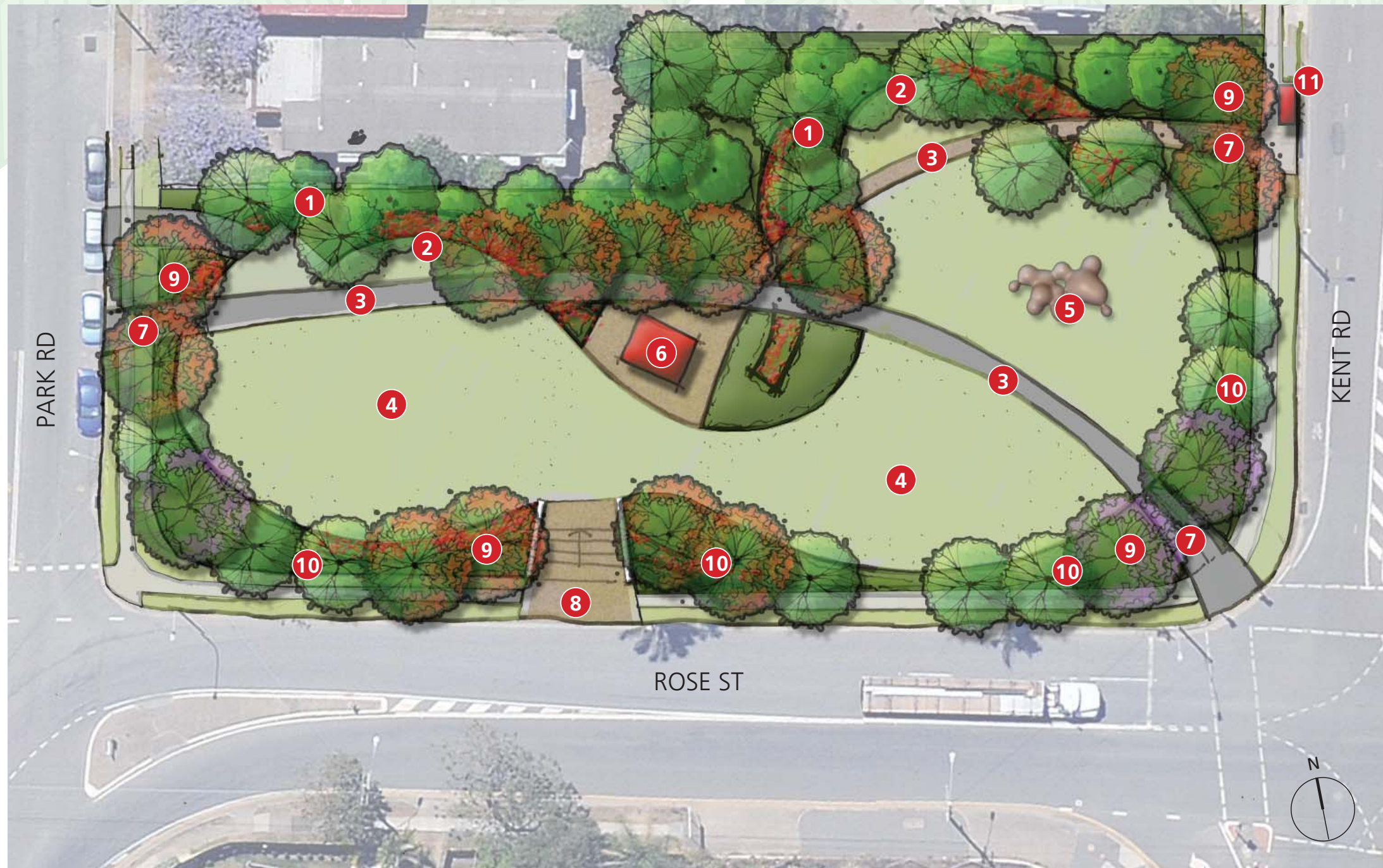


1.1

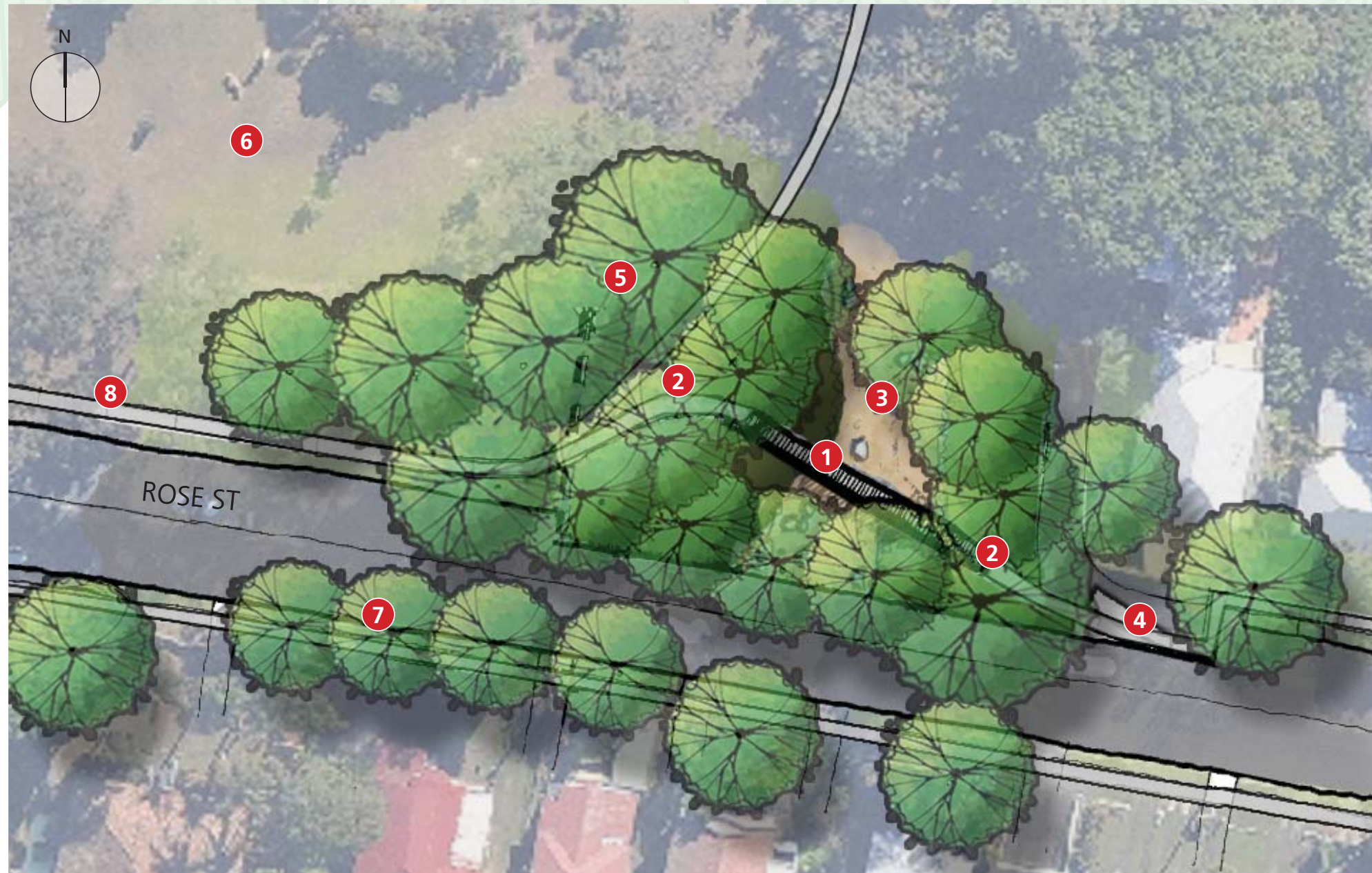


- 1 Buffer planting to rear boundary to residential allotments.
- 2 Timber bench seats.
- 3 2m wide concrete path with feature contrasting colour Provides connection from Kent Road to Rose Street/Park Road intersection. At the entry to the park paths widen to 2.5 - 3m.
- 4 Level lawn terrace/open area.
- 5 Public sculptural play element to lawn area. Local artists to be produce a work also compliments elements to be used within Melrose Park minor works.
- 6 Park shelter with picnic facilities and bins.
- 7 Entry to park will have character gates and formal planting The style of the gates will correspond with the additional proposed up grade to Melrose Park.
- 8 Informal entry stairs to level lawn terrace. Feature low walls with hand rails on either side.
- 9 Feature trees to street sides to frame the park.
- 10 Max 1:3 slope garden with formal planting to street edges.
- 11 Existing Bus Stop.

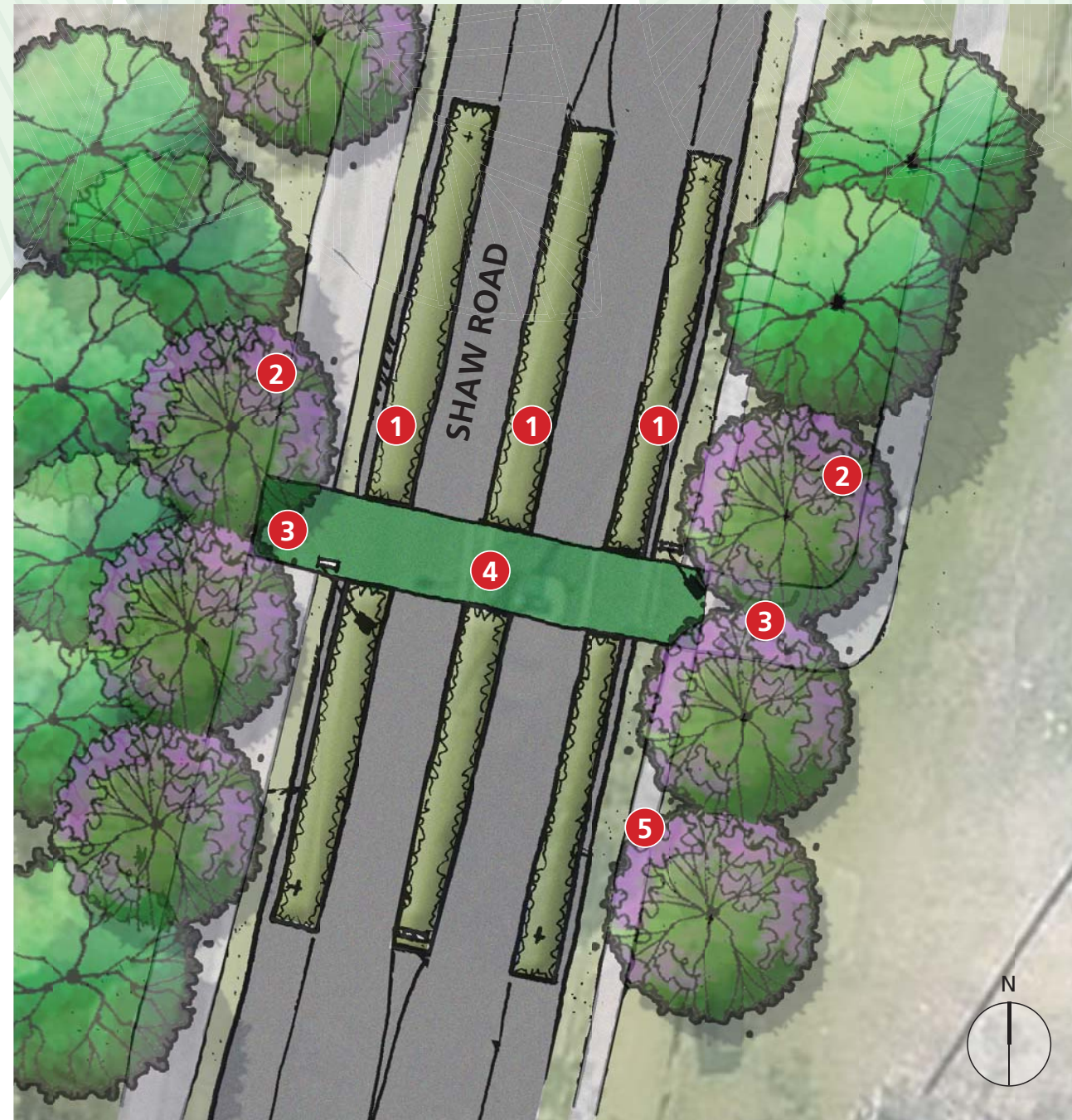
1.2



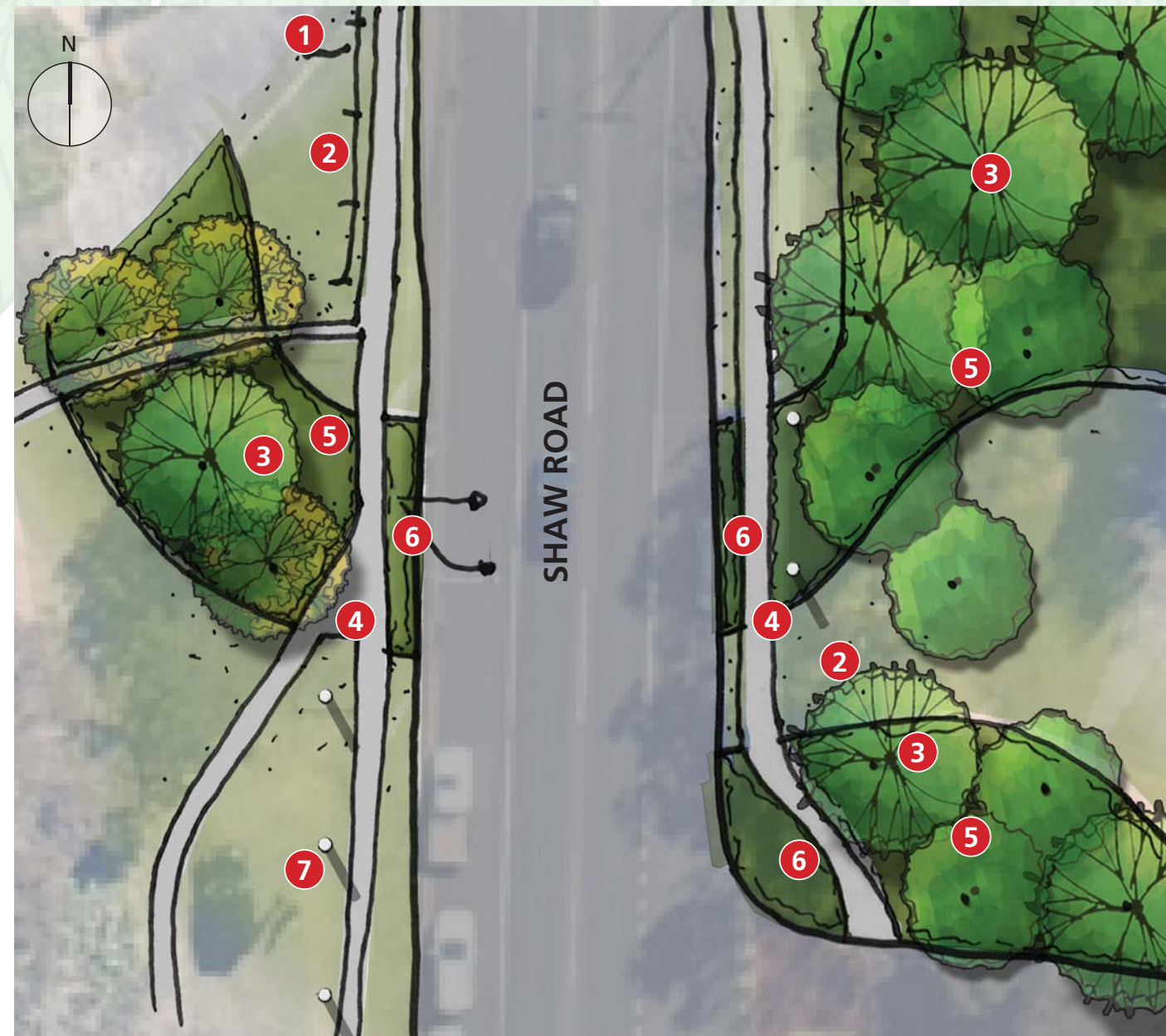
- 1 Melrose Park sports playing fields to remain unchanged.
- 2 Additional infill planting to boundary areas surrounding the fields.
- 3 Access points for BBC maintenance vehicles with boom gates.
- 4 Existing public amenities.
- 5 Proposed upgrade to Melrose Park playground area to include new or refurbished seating, paths, trees and BBQ facilities.
- 6 Entry to park to have character gates, formal planting and additional feature trees. The style of the gates will correspond to the existing style of Melrose Park.
- 7 Supplement existing treed area with natives trees and understorey planting.
- 8 Rose Street Pedestrian and Cycle Bridge
- refer to 1.5 Pedestrian bridge link from Rose Street to Melrose Park.
- 9 2m wide concrete pathway through Melrose Park.
- 10 Additional trees to be planted along pathways on the northern and eastern sides.
- 11 Additional street trees planted in line with the existing Palms on Roseleigh Street.



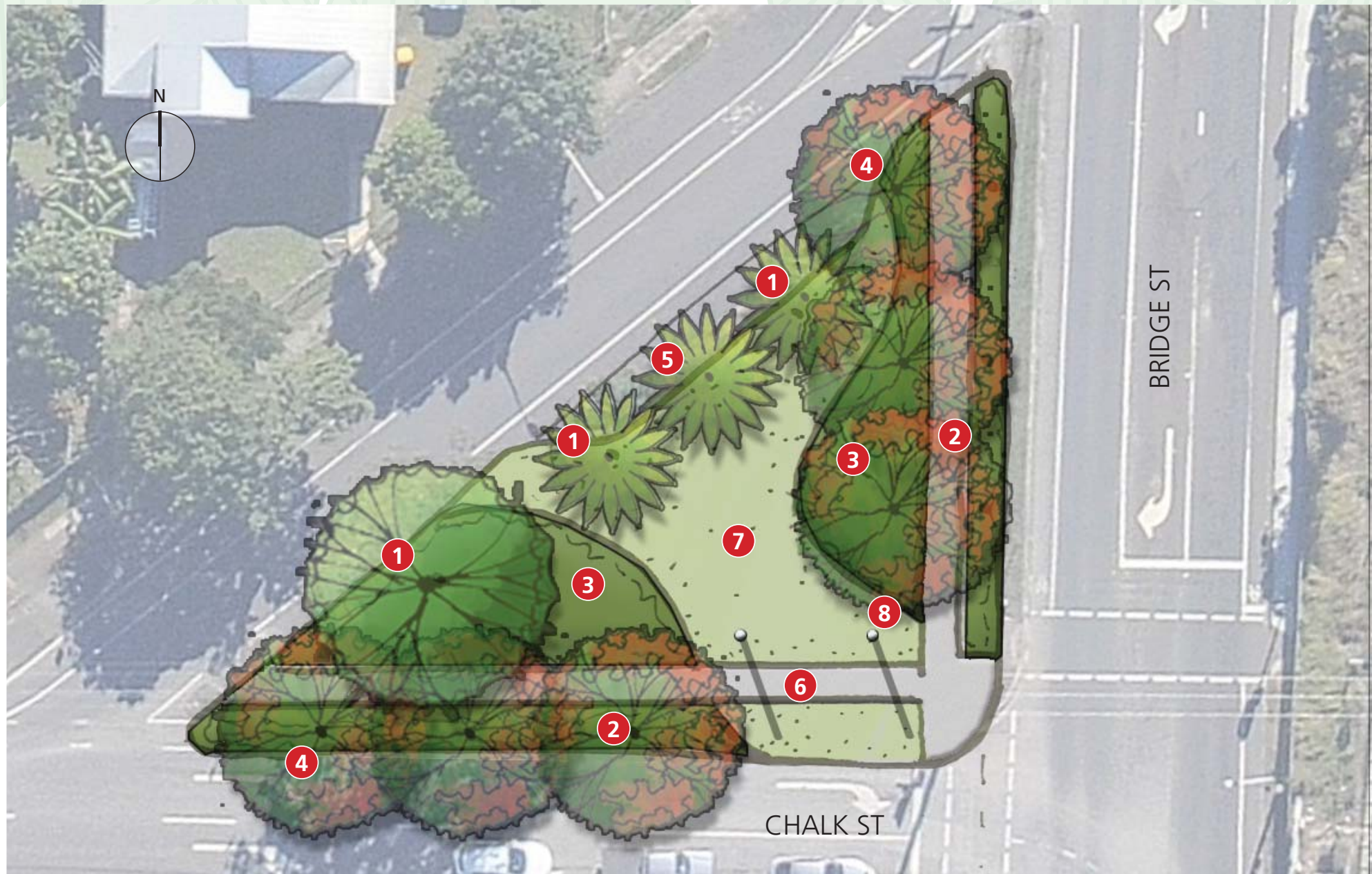
- 1 Footpath on Rose Street to connect with proposed 3m pedestrian and cycle bridge.
- 2 Entry points to the bridge.
- 3 Proposed landscaping to drainage channel in accordance with Environmental Management Plan.
- 4 Existing footpath to join with proposed bridge.
- 5 Supplement existing treed area with natives trees and understorey planting.
- 6 Melrose Park.
- 7 Additional street tree planting to Rose Street.
- 8 Footpaths connection in Melrose Park to be a minimum of 3m width for shared cycle and pedestrian use along Rose Street.



- 1 Feature landscaping to be prominently ornamental and native grasses with contrasting colour to provide a visual indication of entering the Woolloowin area.
- 2 Feature trees to be planted at the edges of the cycleway crossing with existing trees to remain.
- 3 Shared path to be a minimum of 3m in width to cater for shared cycle and pedestrian use.
- 4 Cycle crossing to be a 2.8m wide contrasting asphalt.
- 5 Concrete pedestrian foot paths, to be 2m wide.



- 1 Proposed location for Kedron Brook sign.
- 2 Turf areas provide visual access to the creek.
- 3 Additional *Eucalyptus tereticornis* are to be planted to supplement existing trees.
- 4 2m wide pedestrian concrete paths
- 5 Feature landscaping to be prominently ornamental and native grasses with contrasting colour to provide a visual indication of entering the Woolloowin area. Proposed additional planting in this area is to consider minimising reduction of flows in periods of water levels rising in this area.
- 6 Proposed planting to Shaw Road edges to be grasses.
- 6 Flag poles to be placed at the southern end of the Gateway entry.



- 1 Existing palms and trees to be retained.
- 2 Feature landscaping to be prominently ornamental and native grasses with contrasting colour to provide a visual indication of entering the Woolloowin area.
- 3 Planting areas are to be mounded with a maximum gradient of 1:3.
- 4 Feature street trees to frame the island. Tree species to be in accordance with BBC street tree selection list.
- 5 Additional mature palm to be located between existing palms on site.
- 6 2m wide concrete paths with feature contrasting colour banding.
- 7 Open flat lawn area.
- 8 3 flag poles to be placed at the corner of Chalk Street and Dickerson Street to provide a feature.