

WOOLOOWIN WORKSITE

The Coordinator-General has approved the proposed Woolloowin worksite Request for Project Change.

The Woolloowin worksite will ensure the project's construction program is secure and that hundreds of residents living along the corridor do not endure additional months of disruption. The approval is subject to strict conditions which are designed to ensure that impacts on the Woolloowin community are minimised. The Project Team takes this responsibility seriously and has made a number of changes to plans for the worksite's design and operation during the site establishment phase in response to community feedback. This newsletter is to provide you with an overview of the upcoming construction activities and the mitigation measures being put in place.

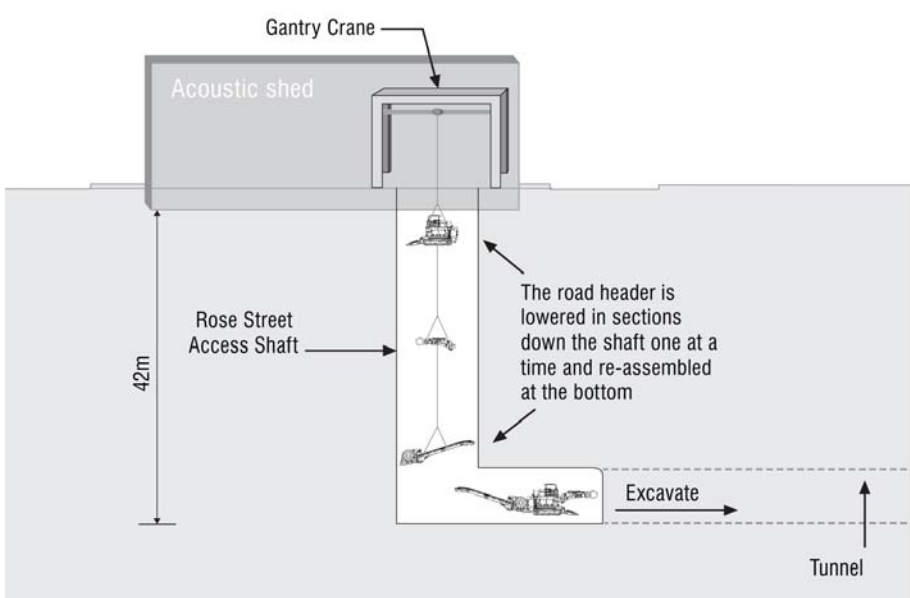
WOOLOOWIN WORKSITE OVERVIEW

BrisConnections and Thiess John Holland (TJH) have received approval from the Queensland Coordinator-General (CoG) to establish a new Airport Link construction site on the vacant land bounded by Rose Street, Park Road and Kent Road in Woolloowin.

Following extensive analysis of the ground conditions at Kedron, TJH identified that tunnelling for the Airport Link on and off ramps would require more extensive construction activities than originally planned.

A temporary tunnel access point, approximately 12 metres in diameter and 42 metres deep, will be built at Woolloowin to launch the Airport Link roadheader machines. These machines will excavate the caverns for the mainline tunnels. These caverns will become a passage for the two Tunnel Boring Machines (TBMs) excavating west from Kalinga Park to the Chalk Street site next year.

The ground conditions and proximity of the Woolloowin worksite to the Airport Link mainline tunnels makes this vacant block the most suitable location to launch the roadheader machines. NO property resumptions, building demolitions or disruption to community facilities will occur.



* This diagram is indicative only

Minimising Community Impact

The Woolloowin worksite has been designed to minimise construction impacts to the environment and surrounding community. Features of this design include:

- 5 metre noise barrier around the worksite
- single-directional route for construction vehicles travelling to and from the site
- purpose-built acoustic shed to minimise noise and dust
- special-purpose lighting to minimise light spill and glare
- traffic control at the site's driveways to direct vehicles and pedestrians.

Site Establishment Activities

Over the coming weeks, the Project Team's main focus will be to begin building a 5 metre noise barrier around the Woolloowin worksite to help reduce noise, dust and visual impacts.

Other activities will include site clearing, concrete pours, the delivery of office facilities and building the worksite's driveways off Kent and Park Roads.

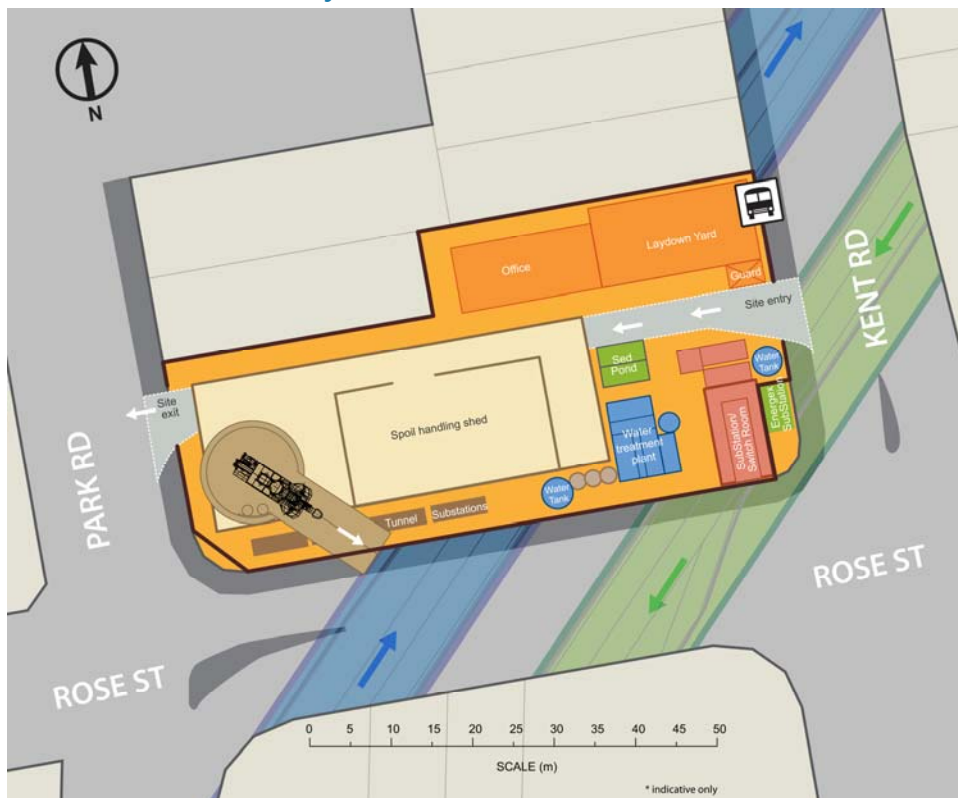
These activities will require frequent deliveries to site and will generate construction noise such as vehicle movements, drilling and hammering. Supervised temporary lane closures may also be required.

Thiess John Holland will monitor construction impacts throughout the operation of the Woolloowin worksite. The results of this monitoring will be posted to the project web site each month. Visit

www.brisconnections.com.au

View the Coordinator-General's Change Report for Woolloowin online: www.dip.qld.gov.au/projects/transport/tunnels-and-bridges/airport-link-tunnel-project.html

Woolloowin Worksite Layout



Mitigation Measures

Thiess John Holland (TJH) has developed a detailed mitigation plan for implementation during the site's establishment and operation. A key part of this plan is the installation of a 5 metre noise barrier and acoustic shed.

Initial discussions with residents and businesses identified as requiring additional mitigation have been held (subject to the CoG's decision). In the coming days, TJH will follow up with these residents to discuss mitigation options and installation dates. Installation will be prioritised based on their proximity to the worksite and mitigation will be developed on a case by case basis. Mitigation measures will be carried out progressively as the site establishment activities increase.

Parking

During site establishment workers will park within the Woolloowin worksite. After site establishment, workers will park at the Kedron Football Club and will be shuttled from the Kedron Brook Building to site at the beginning and end of each shift. TJH will work with the Brisbane City Council to implement parking restrictions in front of businesses on Kent Road. In addition workers will be instructed not to park in local streets and TJH will install signage to reinforce this.

School Safety

TJH will construct a school crossing on Park Road in front of Kedron State High School. When site spoil haulage commences, this crossing will be managed with traffic control, during school drop off and pick up times (subject to road authority approval).

Traffic control will also be positioned at the worksite's access driveway on Kent Road during the spoil haulage operation to manage pedestrians and trucks at this location. Additional measures such as pedestrian chicanes and signage are planned (subject to road authority approval).

Spoil Truck Management

Airport Link spoil haulage trucks are fitted with GPS to assist with the management of truck movements.

This system will help to prevent spoil trucks from using unauthorised roads and queuing in local streets. It will also monitor truck driver behaviour (e.g. speed). Spoil haulage trucks will travel a circuit route to and from the Woolloowin worksite. The spoil trucks will use Rode Road, Gympie Road and Park Road when travelling to the site and Rose Street, Junction Road and Sandgate Road (northbound only) when travelling from the site. Spoil trucks will turn left into the site from Kent Road and left out of the site to Park Road.



Spoil haulage trucks will be fitted with an orange Airport Link flag to clearly identify them with the Woolloowin worksite. All other Airport Link spoil haulage trucks are fitted with green flags.

Timeline

STAGE 1- Site establishment and service works will include:

- Install temporary fencing
- Conduct environmental monitoring and soil testing
- Identify nearby services such as water
- Surveying work
- Install temporary facilities (e.g. bathrooms)
- Commence site clearing including removal of some trees
- Build site driveways
- Commence concreting
- Construct a 5 metre noise barrier
- Commence bored piling operation (ground stabilising activity)
- Start shaft excavation
- Build acoustic shed

STAGE 2- Tunnel excavation and support

- Roadheader delivery
- 24 hour tunnelling
- Increased spoil haulage truck movements

STAGE 3- Civil, mechanical and electrical tunnel fit-out

- Delivery of materials and tunnel lining

STAGE 4- Reinstatement and revegetation

- Clear the site and plant trees (subject to community consultation)

A more detailed timeline will be provided in the coming weeks.

Working With The Community

The Woolloowin worksite is a temporary structure and the State Government is committed to turning the site into a community facility upon completion of the Airport Link tunnel.

BrisConnections, through its contractor Thiess John Holland, will work with the local community, the State and Council to develop concepts for the land's use which will be of long-term benefit to the community.

Community Liaison Groups

As part of our commitment to working with the community, a Community Liaison Group (CLG) will be established prior to shaft excavation for the Woolloowin precinct.

CLGs meet regularly and represent the community to identify and communicate issues, ideas and opportunities to the project team and the State. Local businesses, residents and community organisations are members of the CLGs and ensure a broad array of community concerns and interests are addressed. TJH will be advertising for applications shortly.

Keeping You Informed

You will be kept up-to-date about planned construction activities and progress at the Woolloowin worksite by community notices and regular door knocks by our community team.

If you would like a personal briefing regarding the Woolloowin worksite please call 1800 721 783 (freecall). You can also receive email updates by registering at www.brisconnections.com.au or calling the 24 hour Community Hotline 1800 721 783 (freecall) for further information about construction activities.



The Coordinator-General's Change Report for Woolloowin is available online www.dip.qld.gov.au/projects/transport/tunnels-and-bridges/airport-link-tunnel-project.html

For more information about the Woolloowin worksite please contact Thiess John Holland:

Phone: 1800 721 783 (24 Hour Community Hotline)
 Email: contactus@tjh.com.au
 Visit: Visitor Information Centre, Lutwyche Centro, Lutwyche
 Website: www.brisconnections.com.au
 OR CNI: 1800 990 038 info@cni.qld.gov.au

